



HUNTER
CONTINUOUS INSULATION

Hunter Xci Polyiso - Punched Inline Window Detail - Sill

Hunter Xci Wood Composite

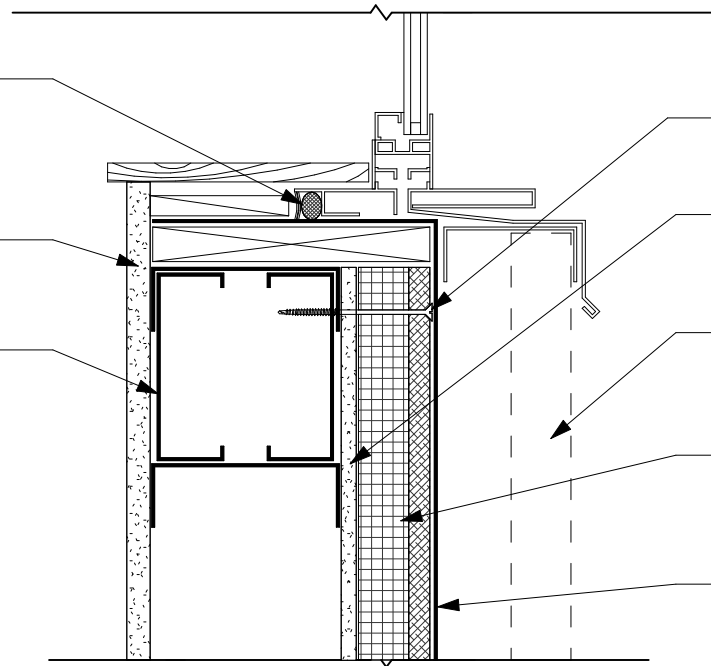
Continuous Insulation under WRB
With Sheathing

Exterior Cladding
Non-Masonry

PROVIDE CONTINUOUS
SEAL OF WINDOW TO
WRB/MEMBRANE WITH
APPROVED SEALANT

INTERIOR SHEATHING

STEEL OR
WOOD STUDS



MECHANICAL ATTACHMENT

EXTERIOR WOOD OR
GYPSUM SHEATHING

EXTERIOR CLADDING

HUNTER Xci WOOD COMPOSITE

WRB/MEMBRANE

NOTE
FASTEN AND SHIM WINDOWS ACCORDING
TO MANUFACTURERS INSTRUCTIONS

Drawing Not To Scale

www.hunterpanels.com 888.746.1114