



# Hunter Xci Polyiso - Punched Inline Window Detail - Sill

Hunter Xci Wood Composite

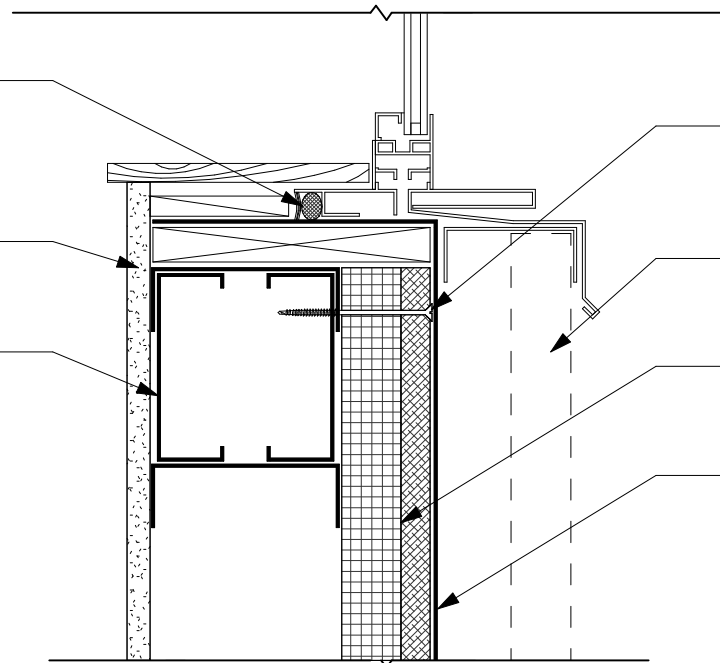
Continuous Insulation under WRB  
No Sheathing

Exterior Cladding  
Non-Masonry

PROVIDE CONTINUOUS  
SEAL OF WINDOW TO  
WRB/MEMBRANE WITH  
APPROVED SEALANT

INTERIOR SHEATHING

STEEL OR  
WOOD STUDS



MECHANICAL ATTACHMENT

EXTERIOR CLADDING

HUNTER Xci WOOD COMPOSITE

WRB/MEMBRANE

**NOTE**

FASTEN AND SHIM WINDOWS ACCORDING  
TO MANUFACTURERS INSTRUCTIONS

Drawing Not To Scale

www.hunterpanels.com 888.746.1114